

# Wilston State School

## New multi-purpose hall

Wilston State School, established in 1920, is a vibrant primary school with 900 students from Prep to Year 6, in the Wilston, Grange and Alderley communities. Wiley partnered with Wilston State School to deliver a transformative, multi-use education facility designed to enhance learning, wellbeing, and community connection.

📍 Grange, Queensland  
 💰 \$16.7M  
 🕒 Jan 2024 – June 2025  
 🏗️ Construction

### Project scope

This project involved demolition of the existing two-classroom GLA (General Learning Area) spaces and adjoining amenities block, making way for a purpose-built, multi-use educational facility. The new two-level structure includes a carpark, full-sized sports floor, dedicated drama and performance stage, and flexible GLA spaces—delivering a future-focused environment that enhances student learning, wellbeing, and community engagement.

Designed for versatility and efficiency, the facility will support a broad range of curricular and extracurricular activities, while maximising the use of available space.

### Business value to client

Wiley's collaborative approach with Wilston State School was key to the successful delivery of a complex project within a live school environment. Through proactive planning, clear and consistent communication, and close coordination with school leadership, Wiley ensured the safety and wellbeing of students, staff, and visitors at every stage of construction.

Robust safety protocols, clearly defined site separation, and strategically staged works during school holidays, minimised disruption to learning. Regular briefings and timely updates kept all stakeholders informed and engaged, fostering trust and allowing school operations to continue seamlessly.

Wiley's delivery model—anchored in technical excellence, transparent communication, and respect for the school community—resulted in a high-quality facility that will inspire learning and support connection for years to come.

The outcome reflects a shared commitment to creating educational spaces that are not only functional, but lasting, meaningful, and truly ready to serve the school community.

### Partners and consultants

L&R Engineers, Managers, and Scientists | Leckton Linings Pty Ltd | ATW Group Pty Ltd | Biscoe Wilson Architects | Brandons Electrical | Statewide Roofing



GLA's



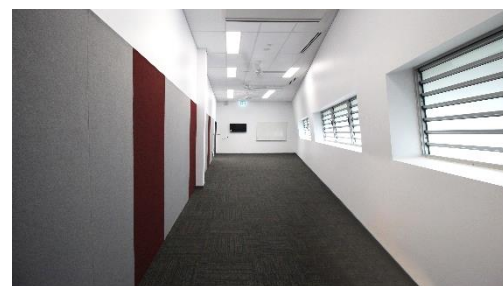
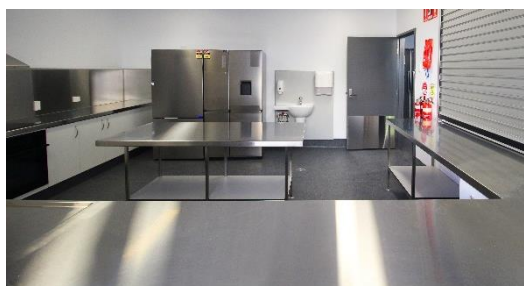
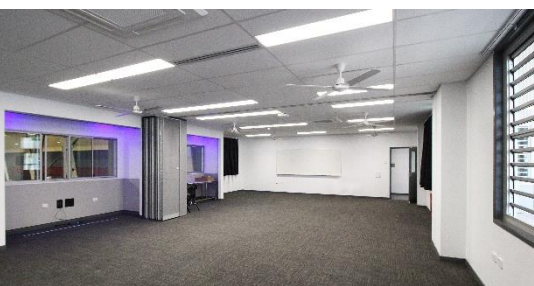
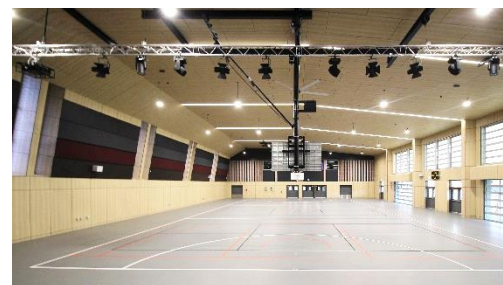
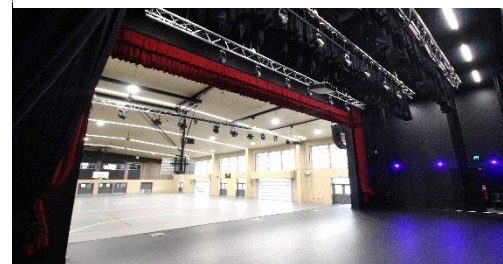
Live environment



High collaboration



Sustainable



## Building with care: construction in a sensitive natural setting

Set within a tightly constrained site, this project was bordered by heritage-listed trees with deep cultural and environmental significance. Some had stood for more than a century. Preserving these trees while delivering a high-quality facility demanded precision, planning, and a commitment to sustainability from day one.

## Thoughtful planning and expert collaboration

Wiley engaged a qualified arborist early in the planning phase, embedding tree protection into every stage of the project. With valuable input from engineers, designers, and the client, a series of tailored solutions were developed to manage risk and respect root zones. Key protective measures included:

- Marking Tree Protection Zones (TPZs) in the Site Establishment Plan
- Installing exclusion barriers with specialist signage
- Embedding tree protection protocols into site inductions, pre-start briefings and inspections, ensuring everyone on site understood the significance of the surrounding heritage trees—and their role in protecting them.
- Scheduling monthly arborist checks with prompt follow-up on any findings
- Solving complexity through teamwork

The site's tight footprint, existing fill, and proximity to root zones introduced structural and sequencing challenges. To keep the project on track, Wiley led a coordinated resolution process with the arborist, engineers, architect, and client. Together, they designed an arborist-approved solution featuring:

- Structural root zone management
- Soil injection techniques to support tree health
- Real-time monitoring and agile adjustments
- A legacy of sustainable delivery

This project stands as a testament to what can be achieved when care, collaboration, and expertise come together.

Through a united effort, over a dozen heritage trees were successfully preserved without compromising the program. By fostering open communication and shared problem-solving, the team delivered a sustainable outcome.



*What mattered most to Wilston State School was a high-quality, lasting outcome that would serve the school community for years to come.*

*Wiley understood how important this project was to them—and shared their commitment to delivering something truly special.*

*We received some great feedback that our responsiveness, attention to detail, clear communication, and genuine care for delivering a meaningful outcome were evident at every stage of the project.*

